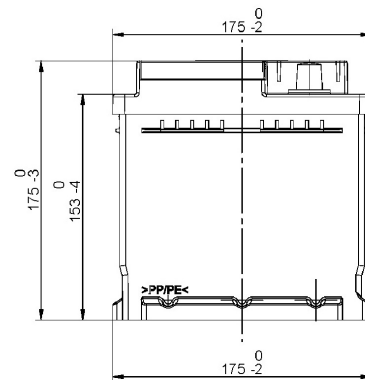
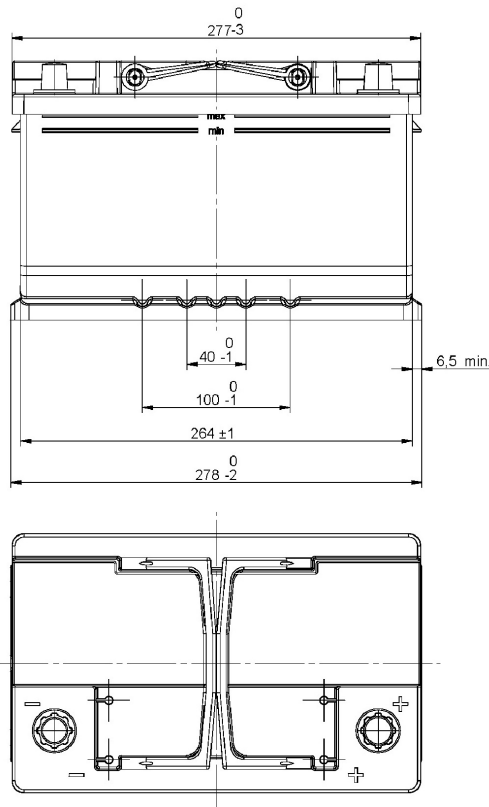


Central Article Code: LB3066C39-B
 Local Code: EL652

Created: 05/06/2013
 Modified: 03/06/2020



Final Outlook	LB339-B
Approval date	15/09/2012

PERFORMANCES

Voltage (V): 12 V
 C20 (Ah): 65.0 20 h
 Cranking (A): 650 EN
 Charge: WET
 Technology: Vented/Flooded
 Grid: Ca/Ca

STD. DIMENSIONS

Length (mm ± 2): 278
 Width (mm ± 2): 175
 Height (mm ± 2): 175
 Total Weight (kg ± 5%): 16.20

All figures show nominal values. Tolerances are according to EN50342 and applicable European Regulations.

CONTAINER

Type: LB3 BLACK
 Hold Down: B13
 H.D. Adapter: No

COVER

Type: Double with Inte BLACK
 Polarity: ETN 0
 Terminals: EN taper post
 Terminal Adapter: No
 SOCI: No
 Ventilation: Central
 Filter: 1 Filter at Right
 Lateral Plug: No

PLUGS

Type: 1 x Vent Seale BLACK

HANDLES

Type: 2 x PSL OE Integrate BLACK

OTHERS

Degassing Tube: No