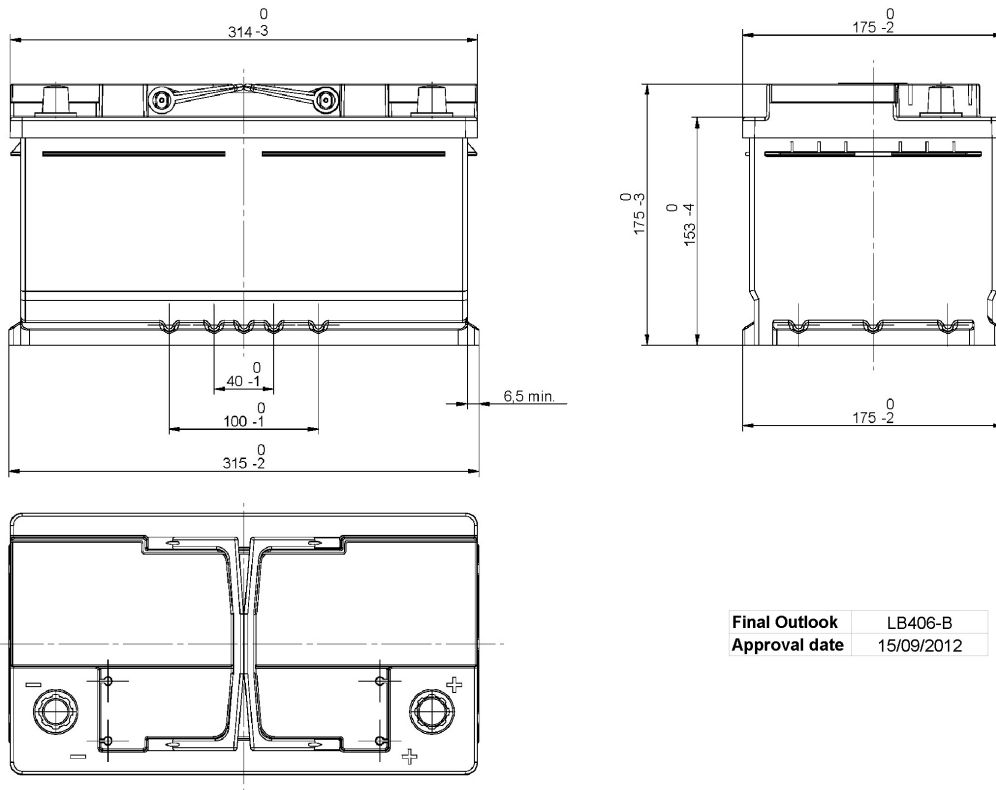


Central Article Code: LB4073C06-B  
 Local Code: EL752

Created: 05/06/2013  
 Modified: 03/06/2020



Final Outlook	LB406-B
Approval date	15/09/2012

## PERFORMANCES

Voltage (V):	12 V	
C20 (Ah):	75.0	20 h
Cranking (A):	730	EN
Charge:	WET	
Technology:	Vented/Flooded	
Grid:	Ca/Ca	

## STD. DIMENSIONS

Length (mm ± 2):	315
Width (mm ± 2):	175
Height (mm ± 2):	175
Total Weight (kg ± 5%):	18.60

All figures show nominal values. Tolerances are according to EN50342 and applicable European Regulations.

## CONTAINER

Type:	LB4	BLACK
Hold Down:	B13	
H.D. Adapter:	No	

## COVER

Type:	Double with Inte	BLACK
Polarity:	ETN 0	
Terminals:	EN taper post	
Terminal Adapter:	No	
SOCI:	No	
Ventilation:	Central	
Filter:	1 Filter at Right	
Lateral Plug:	No	

## PLUGS

Type:	1 x Vent Seale	BLACK
-------	----------------	-------

## HANDLES

Type:	2 x PSL OE Integrate	BLACK
-------	----------------------	-------

## OTHERS

Degassing Tube:	No
-----------------	----