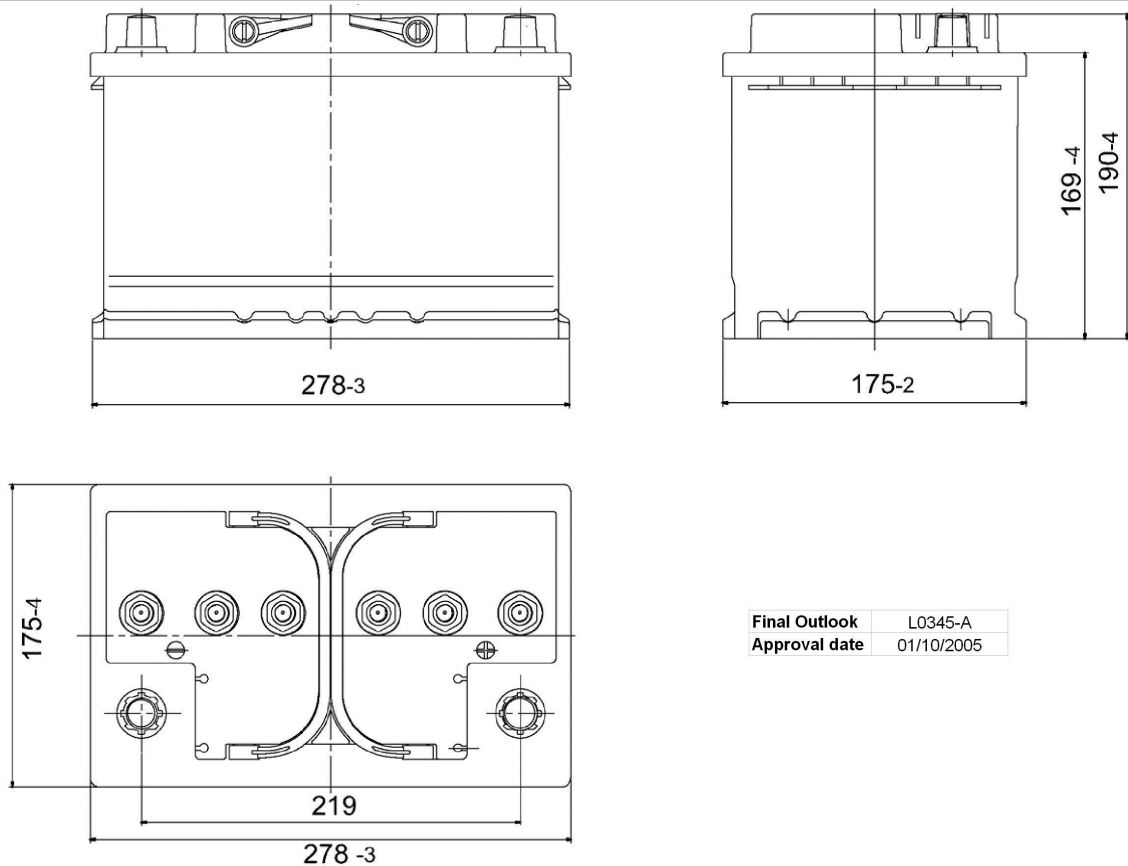


Central Article Code: L03046G45-A
 Local Code: ES 650

Created: 08/09/2005
 Modified: 20/03/2019



Final Outlook	L0345-A
Approval date	01/10/2005

PERFORMANCES

Voltage (V):	12 V	
C20 (Ah):	56.0	20 h
Cranking (A):	0	EN
Charge:	CHARGED	
Technology:	GEL	
Grid:	Ca/Ca	

CONTAINER

Type:	L03	BLACK
Hold Down:	B13	
H.D. Adapter:	No	

COVER

Type:	DIN	BLACK
Polarity:	ETN 0	
Terminals:	EN taper post	
Terminal Adapter:	No	
SOCI:	No	
Ventilation:	Independent	
Filter:	No	
Lateral Plug:	No	

STD. DIMENSIONS

Length (mm ± 2):	278
Width (mm ± 2):	175
Height (mm ± 2):	190
Total Weight (kg ± 5%):	20.80

PLUGS

Type:	6 x Valve+Cov	GREY MEDIUM
-------	---------------	-------------

HANDLES

Type:	2 x Integrated	BLACK
-------	----------------	-------

OTHERS

Degassing Tube:	No
-----------------	----

All figures show nominal values. Tolerances are according to EN50342 and applicable European Regulations.